

# Application Report - No.105

# Drilling Mud



This application was brought to the attention of A-Rental in Oklahoma.

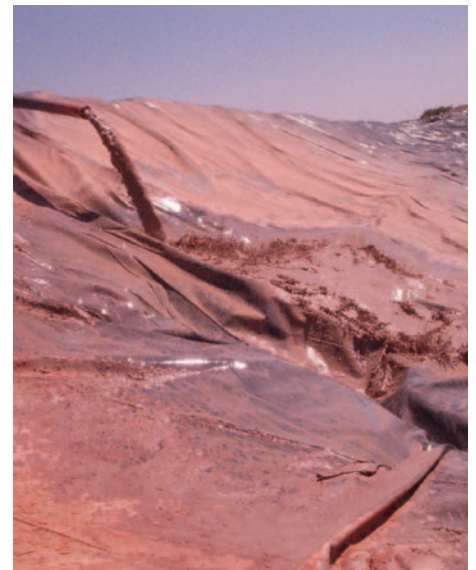
Boomer Drilling, the company involved could not find a pump that would pump heavy drilling mud that was also saturated with "cotton seed holes", without constantly clogging the 4" pipe (the drilling industry only uses 4" pipe because of weight and distance considerations).

A-Rental applied the HS150C, a 6" Selwood Hydraulic Chopper pump to the application powered by the HSP35, to chop the "cotton seed holes" and to condition the drilling pit at the same time.

The 6" pump was manifolded to two 4" lines. one to recirculate the rig pit and the other to carry the drilling mud to the disposal pit.

The result was that the job went ahead with no further line clogging and the hole was completed. The disposal pit was 2,200ft from the rig pit and the pump was delivering approx. 250gpm to the disposal pit through a 4" line, while circulating the rig pit to condition the heavy mud.

As an aside, "cotton seed holes" are the 35mm fibrous husks from which the cotton blooms. These are used to bulk the drilling muds without adding weight.



## HS150C

Power Requirement	
Pump Speed	
Capacity - US Gallons	1350gpm
Suction Lift	-
Max. Solids Size	2in
Air Handling	-
Inlet / Outlet Port	6in
Delivery Head	93½ft



**HEAD OFFICE**  
Selwood Group Limited  
Bournemouth Road, Chandler's Ford  
Hampshire SO53 3ZL UK

[www.selwoodpumps.com](http://www.selwoodpumps.com)

